

Protos 3 Software Installation Quick Guide

1 Start PC

➔ Log onto PC as an Administrator and shut all running software down

2 Insert software source



Setup.exe

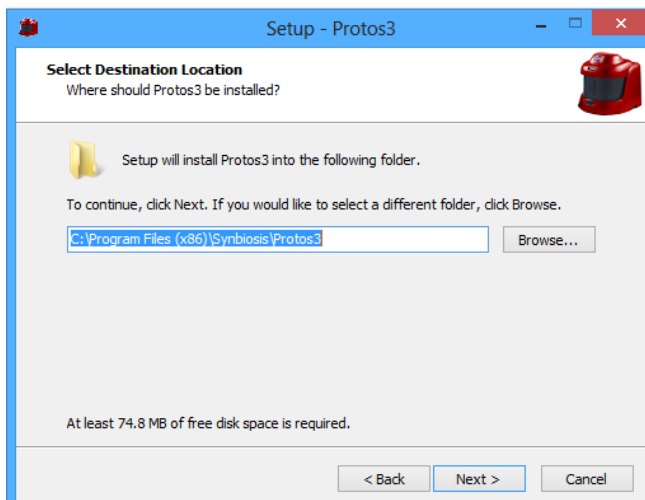
➔ Insert the software source, unzipping if the installation set is zipped. Run the file Setup.exe

3



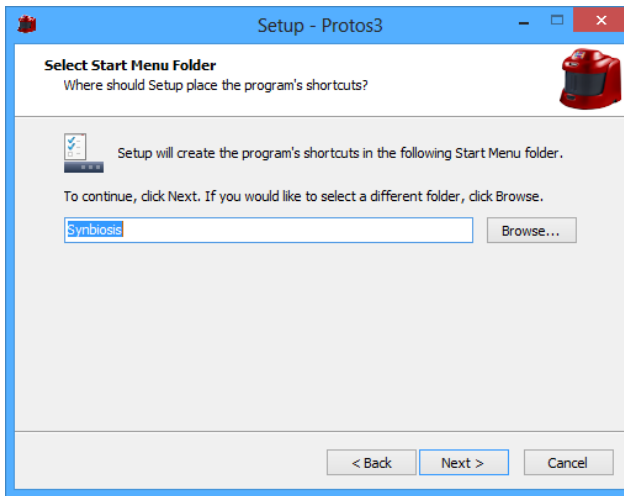
Welcome screen press Next.

4



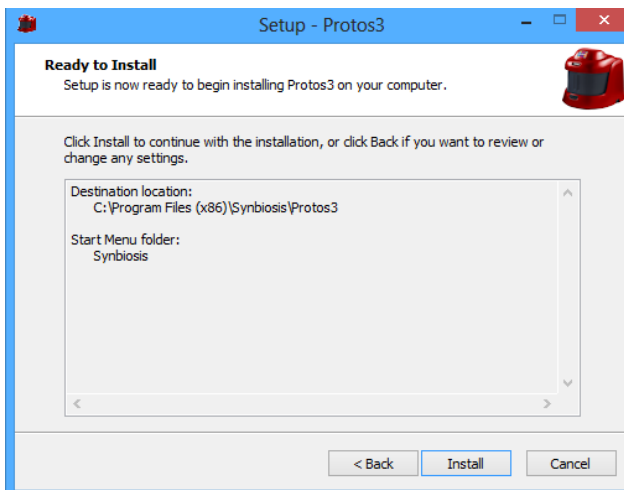
Select the Directory path for the Protos 3 software, then press Next.

5



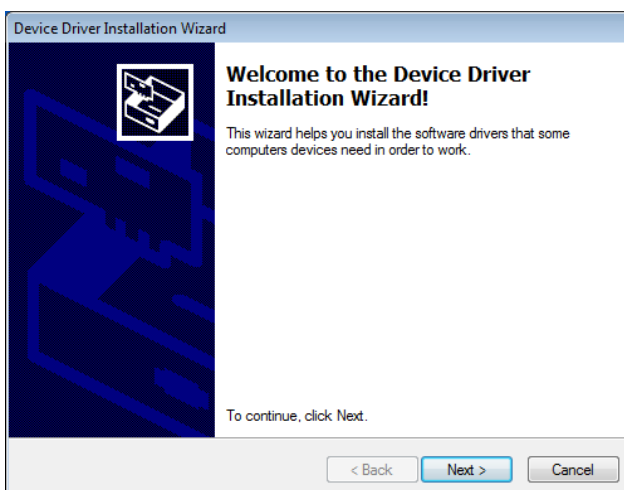
Select the Windows menu start shortcut, then press Next.

6



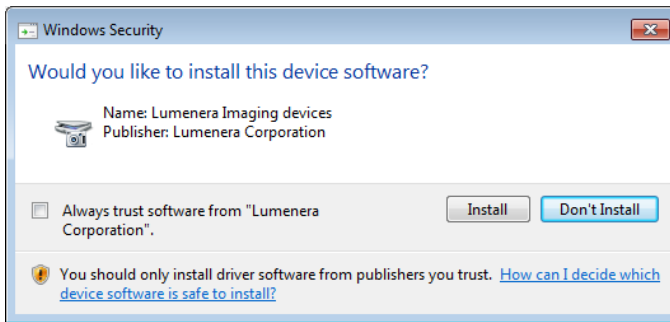
Protos 3 software is ready to install, press Install.

7



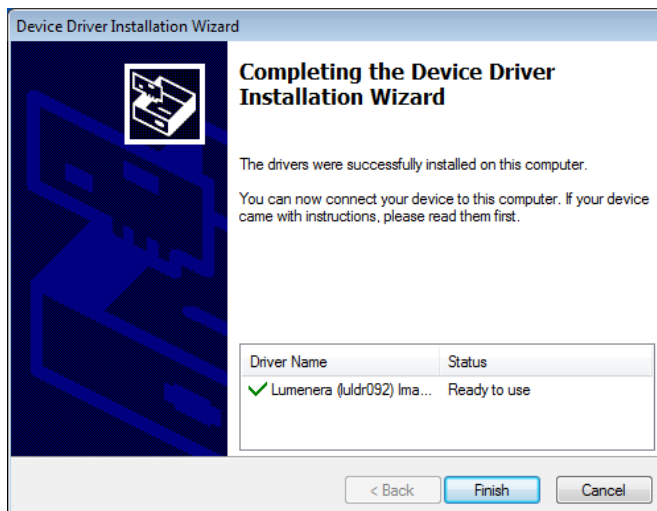
A separate Window may appear for the camera drivers, press Next.

8



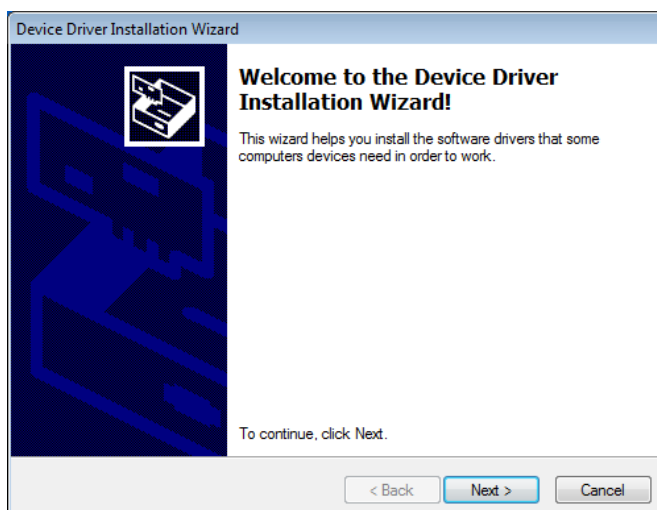
Some systems will display another separate Window for the Lumenera camera Installer, press Install.

9



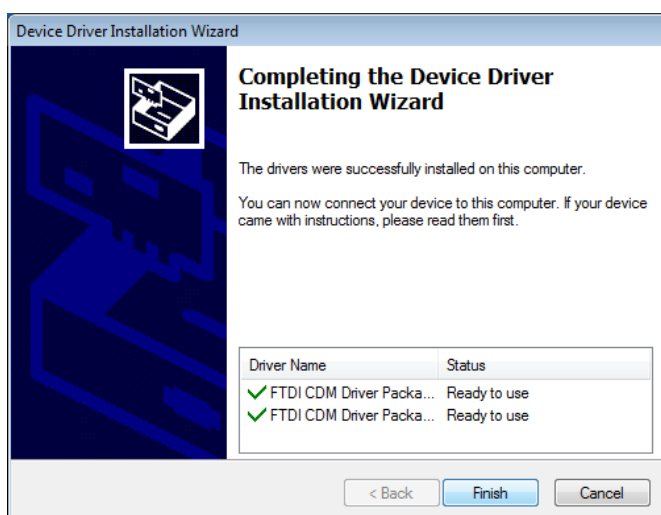
First stage of Camera Installation Complete, press Finish.

10



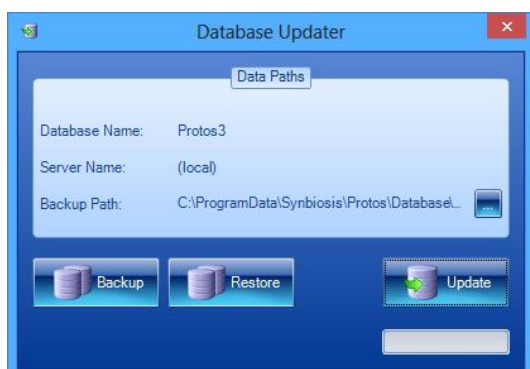
Second stage of camera installation may appear depending on the installation type, press Next.

11



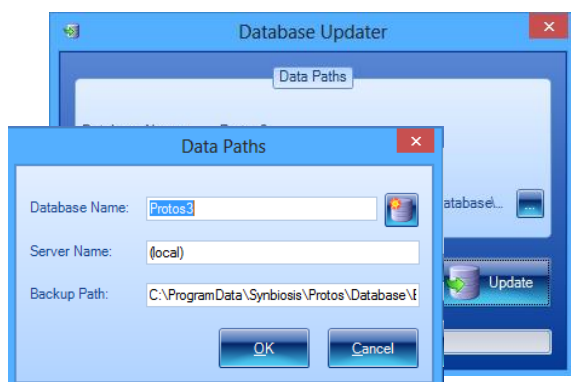
Drivers installed, press finish.

12



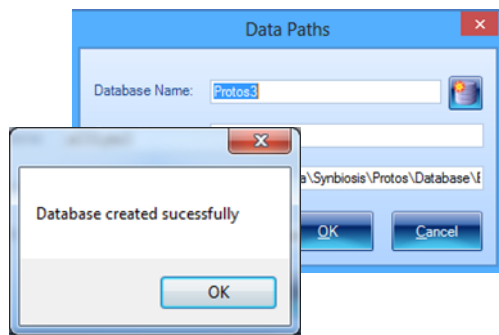
After some time the Database Updater application will appear. It will attempt to either create and update a new database or update an old database. If successful the database application will close itself. If the Database Updater remains on display then this means the database has not been created. If this is the case please go to step 15, otherwise proceed to step 18.

13



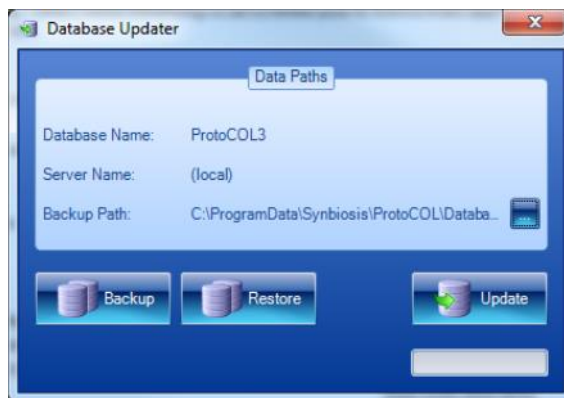
On the Database Updater Window press the blue button with three dots. The data paths window will appear. Enter the Database name and Server name in the appropriate boxes. The server name will be dependant on the type of installation you have performed but by default it would be (local) for a SQL Server Express installation and (localdb)\v11.0 for a SQL LocalDB Express installation.

14



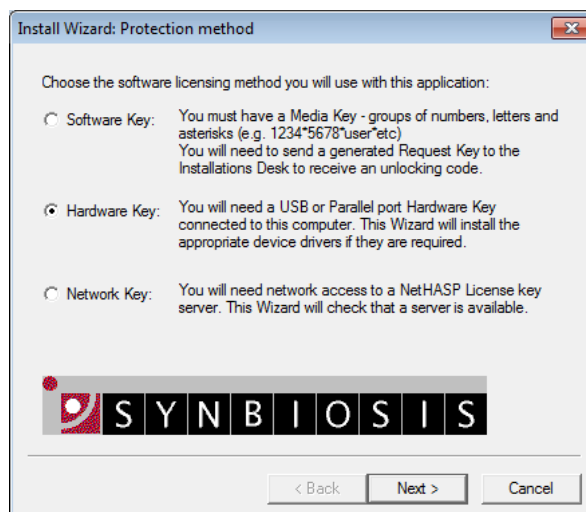
Once the details have been entered press the New Database button (on the right hand side of the Database Name). You will see a message saying "Database Successfully Created", press OK, then press OK again on the Data Paths window. If you see a message saying "There was a problem creating the database" try pressing the Create Database button a number of times as occasionally the initial connection fails.

15



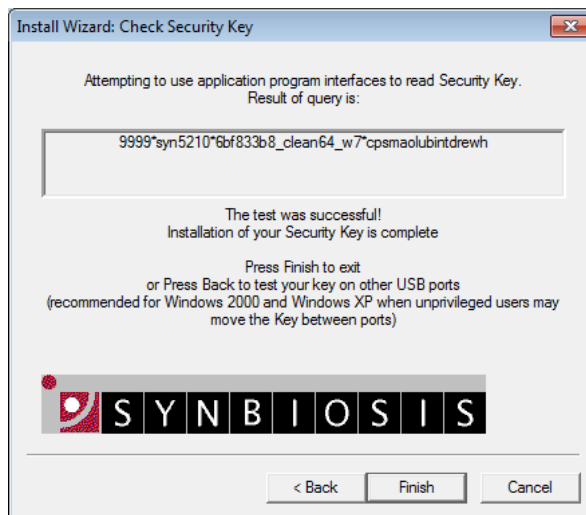
Press the Update button. If any database updates are required they will be applied and the dialog will close.

16



The licensing wizard will appear. Select the appropriate method for licensing and press Next. If using a hardware key (a USB dongle) **do not connect the key until instructed to by the wizard**. The pages that follow will vary depending on the selection. Follow the on-screen instructions.

18



The final page will vary depending on the licensing type. Press Finish.

19



The installation is now complete. Press Finish.

CONTACT SYNBIOSIS:
EUROPE:
Tel: +44 (0)1223 727125
Email: support@synbiosis.com

USA:
Tel: 800 686 4451/301 662 2863
Email: support@synbiosis.com

www.synbiosis.com
P3si0614